

#### 4.1 Connectors

	HelaCon Plus	198
HelaCon series	HelaCon Easy	200
	HelaCon Lux	202

#### 4.2 Mounting Devices

Down light mounting device	SpotClip-I	203
	SpotClip-II	205

#### 4.3 Cable Installation System

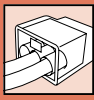
	Cable Scout+ - Sets	206
Cable rod system	Cable Scout+ - Pairs	206
	Cable Scout+ - Accessories	207

#### 4.4 Electrical and Technical Tapes

Tapes		
	HelaTape Flex 15 - all purpose PVC tape	208
	HelaTape Flex 1000+ premium PVC tape	210
	HelaTape Flex 2000+ premium PVC tape for higher mechanical demands	211
Electrical tapes PVC	HelaTape Flex 20 - PVC tape for higher mechanical demands	211
	HelaTape Flex 23 - PVC tape for higher mechanical demands	212
	HelaTape Flex 40 - PVC tape for higher mechanical demands	212
	HelaTape Wrap 25 - PVC tape for corrosion protection	213



	HelaTape Shield 310 conductive tape for shielding	213
	HelaTape Shield 320 conductive tape for shielding	214
	HelaTape Power 410 - arc and fireproofing tape	214
	HelaTape Power 420 - thermal class fabric tape	215
Rubber and high voltage tapes	HelaTape Power 600 low voltage tape	215
	HelaTape Power 750 - medium voltage mastic tape	216
	HelaTape Power 800 - self-amalgamating silicone high voltage tape	216
	HelaTape Power 810 - self-amalgamating high voltage tape	217
	HelaTape Power 820 - self-amalgamating high voltage tape, linerless	217
	HelaTape Power 900 extra high voltage tape	218
Textile tapes	HelaTape Tex - textile tape	220



### Connectors

- **HelaCon Plus**

HelaCon connectors are used for fast, easy and reliable connection and distribution of cable and conductors in electrical installation applications.

#### Features and Benefits

- Sophisticated push-in wire connector
- For professional cable connections in electrical installations
- Double spring for easy assembly
- Supports installers in difficult situations like overhead work
- Correct installation can be visually checked through transparent housing
- Different colour codes for easy identification of size
- Separate voltage test entry on front
- Safe application, installation and maintenance



Connectors of the HelaCon Plus family offering multiple sizes and colours



A huge variety of connectors from 2 to 8 poles is available according to the application. The transparent housings allow a quick and easy checking of the conductor fitting.



One Step to the Web!

<b>MATERIAL</b>	Polycarbonate (PC)
<b>Max Current</b>	24 A
<b>Max Voltage</b>	450 V
<b>Wire Range (VDE)</b>	0.5 to 2.5 mm <sup>2</sup> solid/stranded (max 7 cores)
<b>Stripping Length</b>	11 mm
<b>Flammability</b>	UL94 V2
<b>Operating Temperature</b>	-30 °C to +105 °C
<b>Specifications</b>	CE, cULus, DEMKO, ENEC, FIMKO, Germanischer Lloyd, KEMA-KEUR, NEMKO, SEMKO, VDE



Please note! Not all products listed on this page may have this approval. For product specific approvals please refer to the Appendix.



### Connectors

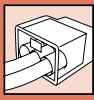
- HelaCon Plus

TYPE	Drawing	Number of Conductors	Colour	Width (W)	Height (H)	Depth (D)	Pack Cont.	Article-No.
HECP-2		2	Transparent (CL), Yellow (YE)	11.8	10.5	19.0	100 pcs.	148-90000
HECP-3		3	Transparent (CL), Orange (OG)	15.9	10.5	19.0	100 pcs.	148-90001
HECP-4		4	Transparent (CL)	20.1	10.5	19.0	75 pcs.	148-90002
HECP-5		5	Transparent (CL), Blue (BU)	24.2	10.5	19.0	50 pcs.	148-90003
HECP-6		6	Transparent (CL), Violet (VT)	28.4	10.5	19.0	50 pcs.	148-90004
HECP-8		8	Transparent (CL), Grey (GY)	36.7	10.5	19.0	40 pcs.	148-90005

All dimensions in mm. Subject to technical changes.  
Minimum Order Quantity (MOQ) may differ from package content.



Please note! Not all products listed on this page may have this approval. For product specific approvals please refer to the Appendix.



### Connectors

- HelaCon Easy

The HelaCon Easy connectors are used for fast, easy and reliable connection, distribution of cable and conductors in the field of electrical installations within junction boxes and control panels.

#### Features and Benefits

- Fast, easy, reliable push-in wire connectors
- For connection and distribution of conductors in electrical housing
- Use typical range of voltages up to 450 volts
- Variety of input poles for flexible application
- Conductor sizes of: 0.5 up to 1.5 mm<sup>2</sup> and 1.0 up to 2.5 mm<sup>2</sup>



The compact design of HelaCon Easy fits perfectly in tight spaces.



One Step to the Web!

<b>MATERIAL</b>	Polyamide (PA)	
<b>Wire Range (VDE)</b>	0.5 - 1.5 mm <sup>2</sup> solid	1.0 - 2.5 mm <sup>2</sup> solid
<b>Max Current</b>	17.5 A	24 A
<b>Max Voltage</b>	450 V	
<b>Stripping Length</b>	11 mm	
<b>Flammability</b>	UL94 V2	
<b>Operating Temperature</b>	-30 °C to +110 °C (VDE), -30 °C to +105 °C (cULus)	
<b>Specifications</b>	ENEC, FIMKO, VDE	CEBEC, cULus, ENEC, FIMKO, KEMA-KEUR, VDE

**HF** ✓ **RoHS** ✓



Please note! Not all products listed on this page may have this approval. For product specific approvals please refer to the Appendix.



### Connectors

- HelaCon Easy

TYPE	Drawing	Wire Range (VDE) in mm <sup>2</sup>	Number of Conductors	Colour	Width (W)	Height (H)	Depth (D)	Pack Cont.	Article-No.
HECE-2		1.0 - 2.5 solid	2	Grey (GY)	10.5	9.5	19.5	100 pcs.	148-90006
HECE-3		1.0 - 2.5 solid	3	Grey (GY)	13.5	9.5	19.7	75 pcs.	148-90007
HECE-4		1.0 - 2.5 solid	4	Grey (GY)	17.2	9.5	19.7	100 pcs.	148-90008
HECE-5		1.0 - 2.5 solid	5	Grey (GY)	21.1	9.5	19.7	100 pcs.	148-90009
HECE-8		1.0 - 2.5 solid	8	Grey (GY)	17.5	16.8	19.0	50 pcs.	148-90010
HECE-3x1.5		0.5 - 1.5 solid	3	Grey (GY)	11.4	8.8	18.5	100 pcs.	148-90013
HECE-5x1.5		0.5 - 1.5 solid	5	Grey (GY)	17.2	8.8	18.5	100 pcs.	148-90015
HECE-8x1.5		0.5 - 1.5 solid	8	Grey (GY)	26.0	8.8	18.5	75 pcs.	148-90018

All dimensions in mm. Subject to technical changes.  
Minimum Order Quantity (MOQ) may differ from package content.



Please note! Not all products listed on this page may have this approval. For product specific approvals please refer to the Appendix.





## Connectors

### • HelaCon Lux

A typical application is lighting installation, where the solid conductor from concealed cabling has to be connected to a flexible conductor for lighting. The 2/1 variant allows the looping through of the supply lines for additional devices.

The conductor on the output/lighting side can easily be inserted by pressing the locking mechanism and can be released in the same way at any time. The lighting side can carry any kind of conductor and makes HelaCon Lux connectors also useful to connect devices that carry flexible connecting cables like control devices e.g. for blinds, fans and other drives.

### Features and Benefits

- Best suitable to connect solid with flexible wire
- Combines push-in connector with lock/unlock spring mechanism
- For fine-stranded conductors at lighting input
- Use with typical voltage current of 450 V / 24 A
- Either one or two inputs for solid conductor on installation side
- Very flexible application
- Tool-free application for easy, time-saving, safe connection
- Especially for overhead work and when wires are difficult to access



One Step to the Web!



Quick installation and release of lighting devices with HelaCon Lux.

<b>MATERIAL</b>	Polyamide (PA)
<b>Max Current</b>	24 A
<b>Max Voltage</b>	450 V
<b>Wire Range (VDE)</b>	0.5 (0.75) - 2.5 mm <sup>2</sup>
<b>Flammability</b>	UL94 V2
<b>Operating Temperature</b>	-5 °C to +100 °C
<b>Specifications</b>	CEBEC, cULus, ENEC, FIMKO, KEMA-KEUR, VDE

HF ✓

RoHS ✓

TYPE	Drawing	Number of Conductors	Colour	Width (W)	Height (H)	Depth (D)	Pack Cont.	Article-No.
HECL-1/1		2	Grey (GY)	8.1	15.8	20.8	100 pcs.	148-90022
HECL-2/1		3	White (WH)	9.5	15.8	20.8	100 pcs.	148-90023

All dimensions in mm. Subject to technical changes.  
Minimum Order Quantity (MOQ) may differ from package content.



Please note! Not all products listed on this page may have this approval. For product specific approvals please refer to the Appendix.



### Down light mounting device

- **SpotClip-I**

SpotClip-I is a unique product that has been developed for mounting down lights in dry mortarless construction and acoustic construction applications.

The innovative, 4-leg ceiling brace has a number of outstanding features and is suitable for use in both panelling and plasterboard.

SpotClip-I consists of non-flammable, fibre-glass reinforced polyamide and offers a number of thermal and mechanical benefits and can even be installed retrospectively.

As a result, it opens up a variety of possibilities for applications in both old and new buildings.

SpotClip-I can be used in ceiling cavities with diameters of 62 to 90 mm.

SpotClip-I ensures that a safe distance is kept between the down light, insulation foil and roof insulation.

It reduces the risk of damage being caused to any insulation material as a result of overheating and heat accumulation and may also have a positive effect on the life time of the lamp.



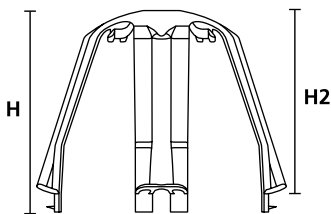
Optimization of 4 fastening feet.



Cable retainers on the heat protection top hold the supply cable in place.



Additional retaining spikes prevent top hold the supply cable in place.



SpotClip-I



Bearing wings ensure that the spacer locates securely on the plasterboard.



One Step to the Web!

TYPE	Hole Ø (FH)	Height (H)	Height (H2)	Colour	Pack Cont.	Article-No.
SpotClip-I	62 - 90	90.0	82.0	Black (BK)	3 pcs.	148-00094
	62 - 90	90.0	82.0	Black (BK)	10 pcs.	148-00076

All dimensions in mm. Subject to technical changes.  
Minimum Order Quantity (MOQ) may differ from package content.



### Down light mounting device

- SpotClip-I

#### Features and Benefits

- Mount down lights in dry, mortarless construction and acoustic construction
- Innovative, 4-leg ceiling spacer
- Suitable for both panelling and plasterboard
- Non-flammable, fibre glass-reinforced polyamide
- Thermal and mechanical benefits
- Can be installed after construction, useful for both old and new buildings
- Use in ceiling cavities 62-90 mm in diameter
- Keeps safe distance between down light, insulation foil and roof insulation
- Reduces risk of damage to insulation from overheating, heat accumulation
- Possible positive effect on lifetime of the lamp

<b>MATERIAL</b>	Polyamide 6.6, Glassfibre reinforced (PA66GF15%)
<b>Operating Temperature</b>	-20 °C to +120 °C
<b>Flammability</b>	UL94 V1, Glow Wire Test (GWT) 960°C

HF ✓

RoHS ✓



Optimization of 4 fastening feet.



SpotClip-II ensures reliability and safety of lighting installations.



SpotClip-II - application with injected insulation.



SpotClip & SpotClip-II - Indispensable accessories for safe electrical installations.



Push the retaining spikes into the plasterboard to prevent subsequent movement.



Standard spotlight (up to 90 mm height).



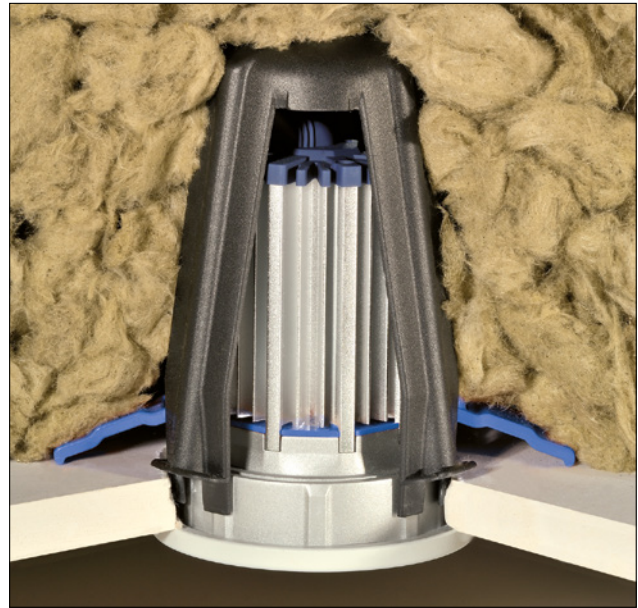
### Down light mounting device

- **SpotClip-II**

SpotClip accessories facilitate the installation of hollow ceiling embedded spotlights. SpotClips can be inserted easily into the ceiling cavity, offering considerable time gain when installing a spotlight. Thanks to their shape and position, SpotClips provide a reliable gap between the lamp and the insulating material, reducing risks of overheating and heat build-up. SpotClip-II is suited to installations with halogen and LED spotlights.

#### Features and Benefits

- For installing suspended ceiling embedded spotlights
- Insert easily into the ceiling cavity to save considerable time
- Reliable gap between down light and insulating material
- Reduced risk of overheating and heat build-up
- Suitable for installing halogen and LED spots



SpotClip-II ensures reliability and safety of lighting installations.



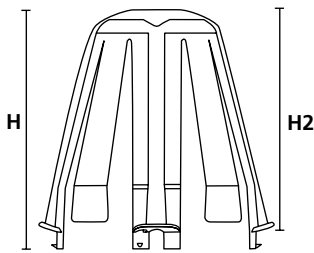
One Step to the Web!



SpotClip-II – 4 fastening feet + 4 flexible lugs.



Optimization of 4 fastening feet.



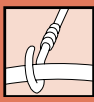
SpotClip-II.

<b>MATERIAL</b>	Polyamide 6.6, Glassfibre reinforced (PA66GF15%)
<b>Operating Temperature</b>	-20 °C to +120 °C
<b>Flammability</b>	UL94 V1, Glow Wire Test (GWT) 960°C



TYPE	Hole Ø (FH)	Height (H)	Height (H2)	Colour	Pack Cont.	Article-No.
SpotClip-II	62 - 90	115.0	107.0	Black (BK)	10 pcs.	148-00098

All dimensions in mm. Subject to technical changes.  
Minimum Order Quantity (MOQ) may differ from package content.



### Cable Scout+

- Cable Scout+ - Sets

#### Features and Benefits

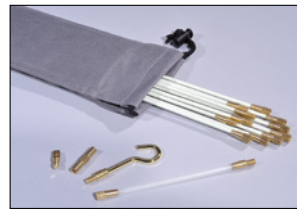
- Professional cable installation tool
- Installation jobs in record time in the most challenging environments
- Rods made of glass-reinforced plastic (GRP)
- Pull cable weight of up to 200 kg
- User can inspect, illuminate and retrieve
- Complete system of rods, useful attachments and storage bag



All components stored neat and tidy with the Cable Scout+ Deluxe set.



One Step to the Web!



Basic Set.

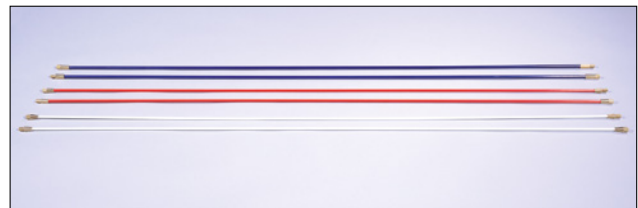


Handy Set.

TYPE	Description	Content Rods	Rod Capacity (m)	Content Accessories	Article-No.
CS-SD	Deluxe Set: a comprehensive set aimed for carrying out larger installations.	2 x 4 x 1000 (yellow) 6 x 5 x 1000 (red) 2 x 6 x 1000 (black)	10.0 m	175 white flexi lead, split ring, gender changer, tuff hook, mini eye, domed bullet, flat bullet, super beam, single magnet	897-90001
CS-SH	Handy Set: made up for fitting in a tool box	1 x 4 x 350 (yellow) 2 x 5 x 350 (red) 1 x 6 x 350 (black)	1.6 m	330 white flexi lead, domed bullet, mini hook, mini eye	897-90003
CS-SB	Standard Set: designed to perform basic cable installation	1 x 4 x 1000 (yellow) 4 x 5 x 1000 (red)	10.0 m	175 white flexi lead, split ring, gender changer, tuff hook, mini eye, domed bullet	897-90000

All dimensions in mm. Subject to technical changes.

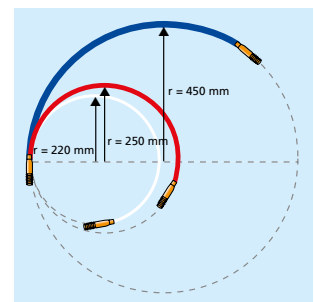
- Rod Sets - Rod Pairs



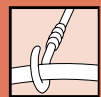
Overview of the rods selection.

TYPE	Content Rods	Flexibility	Ø D	Article-No.
CS-P6	One pair of 1 m blue rods	strong	6.0	897-90007
CS-PN	One pair of 1 m nylon rods	fully flexible	5.0	897-90008
CS-P5	One pair of 1 m red rods	medium	5.0	897-90006
CS-P4	One pair of 1 m white rods	flexible	4.0	897-90005

All dimensions in mm. Subject to technical changes.



Overview on Rod Sets marginal bending radii.



### Cable Scout+

- **Cable Scout+ - Further accessories**

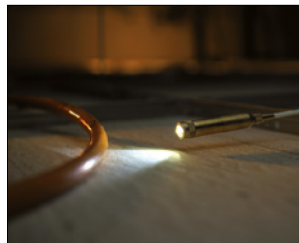
Cable Scout+ comes with many useful accessories. Cable Grips are designed to grip objects from the outside and provide a very reliable super fast method for securing pipes and cables to the rods. Just open a grip by compressing the braided sleeving, push it over a cable and let go, the material will contract immediately and establish a tight grip of the cable to the tool.

#### Features and Benefits

- Professional cable installation tool
- Installation jobs in record time in the most challenging environments
- Rods made of glass-reinforced plastic (GRP)
- Pull cable weight of up to 200 kg
- User can inspect, illuminate and retrieve
- Complete system of rods, useful attachments and storage bag



Cable Grips are available in five different sizes to attach a wide range of cable diameters.



The Rod Set Beam - a perfect tool for seeing into cavities.



The whisk allows the rod to glide over obstructions easily.



The strong magnet lifts a metallic tool of up to 2.5 kg.

TYPE	Drawing	Description	Article-No.
CS-SA		Accessory Kit: Includes a 15 cm long flexi lead, gender changer, mini hook, tuff hook, mini eye, split ring, round bullet, flat bullet, single magnet, chain	897-90004
CS-ACG1630		Cable Grip: Suitable for diameter 1.6 - 3.0 cm	897-90027
CS-ACG0415		Cable grips: Suitable for diameters 0.4 - 1.5 cm	897-90026
CS-AW		Whisk: Enables cables to glide over rough and uneven surfaces.	897-90018
CS-AB		Beam: Useful for inspection purposes in dark surroundings.	897-90016
CS-AMG2		Strong Magnet: A helpful tool to lift metal tools with up to 2.5 kg weight	897-90015

All dimensions in mm. Subject to technical changes.



## HelaTape

HellermannTyton offers a wide range of PVC and rubber tapes for sealing, insulation and bundling of cable and conduits. PVC based tapes are designed for low voltage applications and available in a variety of dimensions and colours. Rubber tapes are best suited for sealing and insulating of cables and splices from low to very high voltage.

### Electrical Tapes PVC

- HelaTape Flex 15 - all purpose PVC tape

#### Features and Benefits

- Insulation tape in several colours
- Highly flexible with good adhesion level
- Flame retardant
- Suitable for mechanical and electrical applications up to 600 volts



One Step to the Web!



Highly flexible and with good adhesion levels HelaTape Flex 15 can be used in several applications.

<b>MATERIAL</b>	Polyvinylchloride (PVC)
<b>Dielectric Strength</b>	40 kV/mm
<b>Adhesion to Steel</b>	2.0 N/10 mm
<b>Adhesion to Backing</b>	1.8 N/10 mm
<b>Elongation at break</b>	200 %
<b>Breaking Strength</b>	24 N/10 mm
<b>Operating Temperature</b>	+90 °C

RoHS

TYPE	Thickness (T)	Width (W)	Length (L)	Colour	Article-No.
HTAPE-FLEX15-15x10	0.15	15.0	10.0 m	Black (BK)	710-00104
	0.15	15.0	10.0 m	Blue (BU)	710-00100
	0.15	15.0	10.0 m	Brown (BN)	710-00107
	0.15	15.0	10.0 m	Green (GN)	710-00103
	0.15	15.0	10.0 m	Green-Yellow (GNYE)	710-00106
	0.15	15.0	10.0 m	Grey (GY)	710-00108
	0.15	15.0	10.0 m	Orange (OG)	710-00110
	0.15	15.0	10.0 m	Red (RD)	710-00101
HTAPE-FLEX15-MX15x10	0.15	15.0	10.0 m	Red (RD), Grey (GY), Yellow (YE), Green (GN), Blue (BU), Orange (OG), White (WH), Brown (BN), Black (BK), Green-Yellow (GNYE)	710-00146
HTAPE-FLEX15-15x10	0.15	15.0	10.0 m	Violet (VT)	710-00109
	0.15	15.0	10.0 m	White (WH)	710-00105
	0.15	15.0	10.0 m	Yellow (YE)	710-00102

All dimensions in mm. Subject to technical changes.  
Minimum Order Quantity (MOQ) may differ from package content.



## Electrical Tapes PVC

- HelaTape Flex 15 - all purpose PVC tape

TYPE	Thickness (T)	Width (W)	Length (L)	Colour	Article-No.
HTAPE-FLEX15-15x25	0.15	15.0	25.0 m	Black (BK)	710-00115
	0.15	15.0	25.0 m	Blue (BU)	710-00111
	0.15	15.0	25.0 m	Brown (BN)	710-00118
	0.15	15.0	25.0 m	Green (GN)	710-00114
	0.15	15.0	25.0 m	Green-Yellow (GNYE)	710-00117
	0.15	15.0	25.0 m	Grey (GY)	710-00119
	0.15	15.0	25.0 m	Red (RD)	710-00112
	0.15	15.0	25.0 m	Violet (VT)	710-00120
	0.15	15.0	25.0 m	White (WH)	710-00116
	0.15	15.0	25.0 m	Yellow (YE)	710-00113
HTAPE-FLEX15-19x20	0.15	19.0	20.0 m	Black (BK)	710-00155
	0.15	19.0	20.0 m	Blue (BU)	710-00151
	0.15	19.0	20.0 m	Brown (BN)	710-00158
	0.15	19.0	20.0 m	Green (GN)	710-00154
	0.15	19.0	20.0 m	Green-Yellow (GNYE)	710-00157
	0.15	19.0	20.0 m	Grey (GY)	710-00159
	0.15	19.0	20.0 m	Red (RD)	710-00152
	0.15	19.0	20.0 m	Violet (VT)	710-00160
	0.15	19.0	20.0 m	White (WH)	710-00156
	0.15	19.0	20.0 m	Yellow (YE)	710-00153
HTAPE-FLEX15-25x25	0.15	25.0	25.0 m	Black (BK)	710-00137
	0.15	25.0	25.0 m	Blue (BU)	710-00133
	0.15	25.0	25.0 m	Brown (BN)	710-00140
	0.15	25.0	25.0 m	Green (GN)	710-00136
	0.15	25.0	25.0 m	Green-Yellow (GNYE)	710-00139
	0.15	25.0	25.0 m	Grey (GY)	710-00141
	0.15	25.0	25.0 m	Red (RD)	710-00134
	0.15	25.0	25.0 m	Violet (VT)	710-00142
	0.15	25.0	25.0 m	White (WH)	710-00138
	0.15	25.0	25.0 m	Yellow (YE)	710-00135

All dimensions in mm. Subject to technical changes.  
Minimum Order Quantity (MOQ) may differ from package content.



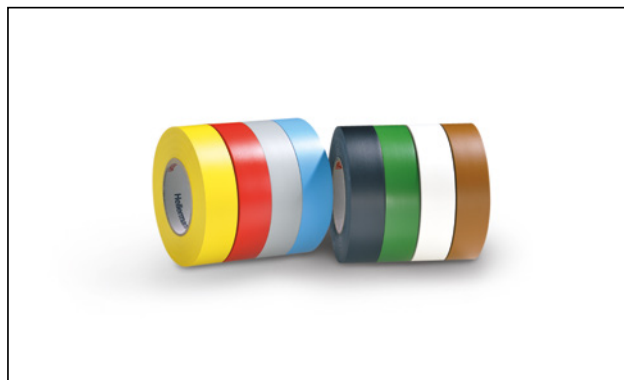


## Electrical Tapes PVC

- **HelaTape Flex 1000+ premium PVC tape**

### Features and Benefits

- All-weather, professional grade, self-adhesive vinyl tape
- Excellent performance over wide range of temperatures
- Flame retardant
- Primary insulation for splices up to 600 volts
- Protective outer jacket over splices and all low temperature applications



*HelaTape Flex 1000+ provides excellent performance over a wide range of temperatures.*

<b>MATERIAL</b>	Polyvinylchloride (PVC)
<b>Dielectric Strength</b>	45 kV/mm
<b>Adhesion to Steel</b>	2.2 N/10 mm
<b>Adhesion to Backing</b>	2.0 N/10 mm
<b>Elongation at break</b>	280 %
<b>Breaking Strength</b>	30 N/10 mm
<b>Operating Temperature</b>	-18 °C to +105 °C

**RoHS** ✓

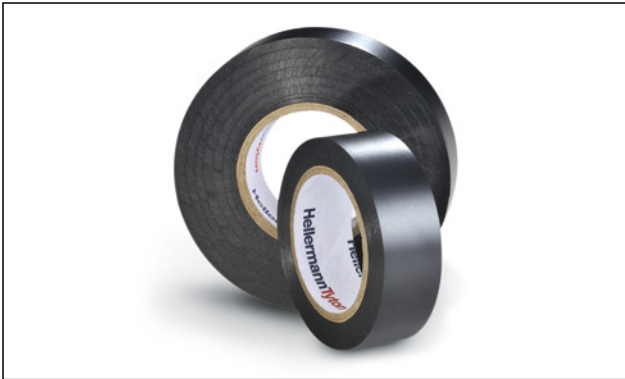
TYPE	Thickness (T)	Width (W)	Length (L)	Colour	Article-No.
<b>HTAPE-FLEX1000+19x6</b>	0.18	19.0	6.0 m	Black (BK)	710-00600
<b>HTAPE-FLEX1000+19x10</b>	0.18	19.0	10.0 m	Black (BK)	710-00601
<b>HTAPE-FLEX1000+19x20</b>	0.18	19.0	20.0 m	Black (BK)	710-00602
	0.18	19.0	20.0 m	Blue (BU)	710-00603
	0.18	19.0	20.0 m	Brown (BN)	710-00609
	0.18	19.0	20.0 m	Green (GN)	710-00606
	0.18	19.0	20.0 m	Grey (GY)	710-00611
	0.18	19.0	20.0 m	Red (RD)	710-00604
	0.18	19.0	20.0 m	White (WH)	710-00607
	0.18	19.0	20.0 m	Yellow (YE)	710-00605
<b>HTAPE-FLEX1000+19x33</b>	0.18	19.0	33.0 m	Black (BK)	710-00612
<b>HTAPE-FLEX1000+50x33</b>	0.18	50.0	33.0 m	Black (BK)	710-00613

All dimensions in mm. Subject to technical changes.  
Minimum Order Quantity (MOQ) may differ from package content.



### Electrical Tapes PVC

- **HelaTape Flex 2000+ premium PVC tape for higher mechanical demands**



As primary insulation for splices up to 600 volts, HelaTape Flex 2000+ is the best choice.

#### Features and Benefits

- All-weather professional grade self-adhesive vinyl tape
- Flame retardant
- 0.21 mm for heavier thickness and more mechanical and electrical protection
- Primary insulation for splices up to 600 volts
- Excellent cold weather performance

<b>MATERIAL</b>	Polyvinylchloride (PVC)
<b>Dielectric Strength</b>	48 kV/mm
<b>Adhesion to Steel</b>	2.2 N/10 mm
<b>Adhesion to Backing</b>	2.0 N/10 mm
<b>Elongation at break</b>	300 %
<b>Breaking Strength</b>	35 N/10 mm
<b>Operating Temperature</b>	-18 °C to +105 °C



### Electrical Tapes PVC

- **HelaTape Flex 20 - PVC tape for higher mechanical demands**



HelaTape Flex 20 - Additional thickness allows for quicker layering.

#### Features and Benefits

- Special high level adhesive
- Flame retardant
- Suitable for mechanical and electrical applications up to 600 volts
- Additional thickness for quicker layering and added abrasion resistance

<b>MATERIAL</b>	Polyvinylchloride (PVC)
<b>Dielectric Strength</b>	45 kV/mm
<b>Adhesion to Steel</b>	4.0 N/10 mm
<b>Adhesion to Backing</b>	3.8 N/10 mm
<b>Elongation at break</b>	220 %
<b>Breaking Strength</b>	38 N/10 mm
<b>Operating Temperature</b>	+105 °C



- **HelaTape Flex 2000+ premium PVC tape for higher mechanical demands**

TYPE	Thickness (T)	Width (W)	Length (L)	Colour	Article-No.
HTAPE-FLEX2000+19x6	0.21	19.0	6.0 m	Black (BK)	710-00700
HTAPE-FLEX2000+19x20	0.21	19.0	20.0 m	Black (BK)	710-00701
HTAPE-FLEX2000+25x33	0.21	25.0	33.0 m	Black (BK)	710-00702
HTAPE-FLEX2000+38x33	0.21	38.0	33.0 m	Black (BK)	710-00703

All dimensions in mm. Subject to technical changes.  
Minimum Order Quantity (MOQ) may differ from package content.

- **HelaTape Flex 20 - PVC tape for higher mechanical demands**

TYPE	Thickness (T)	Width (W)	Length (L)	Colour	Article-No.
HTAPE-FLEX20-19x20	0.20	19.0	20.0 m	Black (BK)	710-00300

All dimensions in mm. Subject to technical changes.  
Minimum Order Quantity (MOQ) may differ from package content.



### Electrical Tapes PVC

- HelaTape Flex 23 - PVC tape for higher mechanical demands



HelaTape Flex 23 for higher mechanical and electrical demands.

#### Features and Benefits

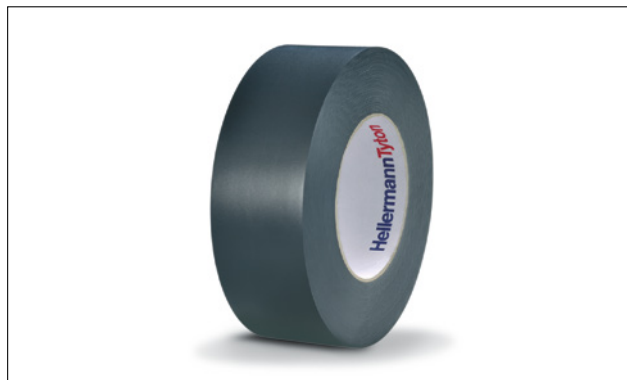
- Special high level adhesive
- Flame retardant
- Suitable for mechanical and electrical applications up to 600 volts
- Additional thickness for quicker build-up and added abrasion resistance

<b>MATERIAL</b>	Polyvinylchloride (PVC)
<b>Dielectric Strength</b>	48 kV/mm
<b>Adhesion to Steel</b>	4.0 N/10 mm
<b>Adhesion to Backing</b>	3.8 N/10 mm
<b>Elongation at break</b>	240 %
<b>Breaking Strength</b>	45 N/10 mm
<b>Operating Temperature</b>	+105 °C

RoHS ✓

### Electrical Tapes PVC

- HelaTape Flex 40 - PVC tape for higher mechanical demands



HelaTape Flex 40 for higher abrasion resistance.

#### Features and Benefits

- Special high level adhesive
- Flame retardant
- Suitable for mechanical and electrical applications up to 600 volts
- Additional thickness for quicker build-up and added abrasion resistance

<b>MATERIAL</b>	Polyvinylchloride (PVC)
<b>Dielectric Strength</b>	35 kV/mm
<b>Adhesion to Steel</b>	4.2 N/10 mm
<b>Adhesion to Backing</b>	4.0 N/10 mm
<b>Elongation at break</b>	280 %
<b>Breaking Strength</b>	86 N/10 mm
<b>Operating Temperature</b>	+105 °C

RoHS ✓

- HelaTape Flex 23 - PVC tape for higher mechanical demands

TYPE	Thickness (T)	Width (W)	Length (L)	Colour	Article-No.
HTAPE-FLEX23-19x33	0.23	19.0	33.0 m	Black (BK)	710-00401
HTAPE-FLEX23-38x33	0.23	38.0	33.0 m	Black (BK)	710-00403

All dimensions in mm. Subject to technical changes.  
Minimum Order Quantity (MOQ) may differ from package content.

- HelaTape Flex 40 - PVC tape for higher mechanical demands

TYPE	Thickness (T)	Width (W)	Length (L)	Colour	Article-No.
HTAPE-FLEX40-50x30	0.40	50.0	30.0 m	Black (BK)	710-00500

All dimensions in mm. Subject to technical changes.  
Minimum Order Quantity (MOQ) may differ from package content.



### Electrical Tapes PVC

- **HelaTape Wrap 25 - PVC tape for corrosion protection**



HelaTape Wrap 25 can be used for both overhead and direct burial applications.

#### Features and Benefits

- Special adhesive
- Excellent protection against corrosion
- Complete environmental, mechanical and electrical protection
- Resistant to UV, bacteria and fungus
- Used for both overhead and direct burial applications

<b>MATERIAL</b>	Polyvinylchloride (PVC)
<b>Dielectric Strength</b>	40 kV/mm
<b>Adhesion to Steel</b>	2.4 N/10 mm
<b>Adhesion to Backing</b>	2.0 N/10 mm
<b>Elongation at break</b>	250 %
<b>Breaking Strength</b>	48 N/10 mm
<b>Operating Temperature</b>	+105 °C

**RoHS** ✓

### HelaTape Shield - Conductive tapes

- **HelaTape Shield 310 - self-amalgamating, conductive tape for shielding**



HelaTape Shield 310 self-amalgamating conducting tape for shielding high-voltage splices and terminations.

#### Features and Benefits

- 0.76 mm self-amalgamating, ethylene propylene rubber conducting tape
- Shields high-voltage splices and terminations
- Excellent conducting properties
- Prevents corona effect
- Moisture and UV-resistant and easy to apply
- Used for rebuilding strand and insulation shields on high-voltage splices

<b>MATERIAL</b>	Ethylene Propylene Rubber (EPR)
<b>Operating Temperature</b>	+90 °C
<b>Intermittent Operating Temperature</b>	+130 °C
<b>Water Absorption</b>	0.02 %
<b>Tensile Strength</b>	2.0 MPa
<b>Elongation at break</b>	600 %
<b>Volume Resistance</b>	870 Ω cm

**HF** ✓

**RoHS** ✓

- **HelaTape Wrap 25 - PVC tape for corrosion protection**

TYPE	Thickness (T)	Width (W)	Length (L)	Colour	Article-No.
HTAPE-WRAP25-25x30	0.25	25.0	30.0 m	Black (BK)	710-00800
HTAPE-WRAP25-38x30	0.25	38.0	30.0 m	Black (BK)	710-00801
HTAPE-WRAP25-50x30	0.25	50.0	30.0 m	Black (BK)	710-00802
HTAPE-WRAP25-100x30	0.25	100.0	30.0 m	Black (BK)	710-00803

All dimensions in mm. Subject to technical changes.  
Minimum Order Quantity (MOQ) may differ from package content.

- **HelaTape Shield 310 - self-amalgamating, conductive tape for shielding**

TYPE	Thickness (T)	Width (W)	Length (L)	Colour	Article-No.
HTAPE-SHIELD310	0.76	19.0	4.6 m	Black (BK)	711-00000
	0.76	38.0	9.1 m	Black (BK)	711-00001

All dimensions in mm. Subject to technical changes.  
Minimum Order Quantity (MOQ) may differ from package content.



### HelaTape Shield - Conductive tapes

- HelaTape Shield 320 - tinned copper tape for shielding



HelaTape Shield 320 provides good electromagnetic shielding.

#### Features and Benefits

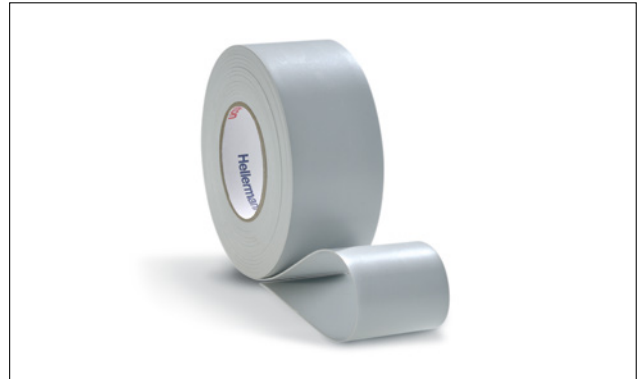
- All-copper knit mesh
- Excellent pliability when applied in the field
- Easy application
- Good electromagnetic shielding

<b>MATERIAL</b>	Tin Plated copper
<b>Elongation at break</b>	5 %

HF ✓ RoHS ✓

### HelaTape Power - Rubber and higher voltage tapes

- HelaTape Power 410 - arc and fireproofing tape



HelaTape Power410 is an unsupported, liner less, elastomeric tape possessing superior arc and flame resistance.

#### Features and Benefits

- Unsupported, linerless, elastomeric tape
- Superior arc and flame resistance
- For cable protection in all type of applications
- Excellent flexibility and conformability for easy application
- Creates insulating residue when exposed to severe flame conditions
- Water, chemical and UV resistant

<b>MATERIAL</b>	Elastomer (PM)
<b>Tensile Strength</b>	8 MPa
<b>Elongation at break</b>	300 %

HF ✓ RoHS ✓

- HelaTape Shield 320 - tinned copper tape for shielding

TYPE	Width (W)	Length (L)	Colour	Article-No.
HTAPE-SHIELD320	25.0	4.6 m	Natural (NA)	711-00002

All dimensions in mm. Subject to technical changes.  
Minimum Order Quantity (MOQ) may differ from package content.

- HelaTape Power 410 - arc and fireproofing tape

TYPE	Thickness (T)	Width (W)	Length (L)	Colour	Article-No.
HTAPE-POWER410	0.76	38.0	6.0 m	Grey (GY)	711-00100

All dimensions in mm. Subject to technical changes.  
Minimum Order Quantity (MOQ) may differ from package content.



### HelaTape Power - Rubber and higher voltage tapes

- HelaTape Power 420 - thermal class fabric tape



HelaTape Power 420 is a woven glass fabric tape with a service temperature rating of 130°C.

#### Features and Benefits

- Woven glass fabric tape with thermosetting rubber-based self adhesive
- High tensile strength
- Excellent tear and abrasion resistance
- Operating temperature rating of 130°C

<b>MATERIAL</b>	Glassfibre Cloth (GF-F)
<b>Operating Temperature</b>	+130 °C
<b>Tensile Strength</b>	6.5 MPa
<b>Elongation at break</b>	5 %



### HelaTape Power - Rubber and higher voltage tapes

- HelaTape Power 600 low voltage tapes



HelaTape Power 600 is a self-amalgamating low-voltage rubber tape.

#### Features and Benefits

- Self-amalgamating low-voltage rubber tape
- Primary insulation at not more than 600 volts
- Easily conforms to irregular shapes and surfaces,
- Void-free electrically stable layering
- Compatible with all extruded dielectric cable insulations

<b>MATERIAL</b>	Natural Rubber (NR)
<b>Operating Temperature</b>	+80 °C
<b>Intermittent Operating Temperature</b>	+95 °C
<b>Tensile Strength</b>	2.40 MPa
<b>Elongation at break</b>	450 %
<b>Volume Resistance</b>	10 <sup>13</sup> Ω cm
<b>Dielectric Strength</b>	25 kV/mm



- HelaTape Power 420 - thermal class fabric tape

TYPE	Thickness (T)	Width (W)	Length (L)	Colour	Article-No.
HTAPE-POWER420	0.18	19.0	20.0 m	White (WH)	711-00101

All dimensions in mm. Subject to technical changes.  
Minimum Order Quantity (MOQ) may differ from package content.

- HelaTape Power 600 low voltage tapes

TYPE	Thickness (T)	Width (W)	Length (L)	Colour	Article-No.
HTAPE-POWER600	0.76	19.0	6.7 m	Black (BK)	711-00200
	0.76	38.0	6.7 m	Black (BK)	711-00201

All dimensions in mm. Subject to technical changes.  
Minimum Order Quantity (MOQ) may differ from package content.



### HelaTape Power - Rubber and higher voltage tapes

- HelaTape Power 750 - medium voltage mastic tape



HelaTape Power 750 is a self-amalgamating, medium-voltage insulating compound.

#### Features and Benefits

- Self-amalgamating, medium-voltage insulating compound
- For quick, void-free insulation layering
- Easily moulded by hand to conform to irregular shapes
- Primary insulation for splices up to 5 kV with other insulating tapes
- Ideal for covering split bolts, padding bus bar edges and connections
- Excellent seal against moisture

<b>MATERIAL</b>	Isobutene-Isoprene-Rubber (butyl rubber) (IIR)
<b>Operating Temperature</b>	+80 °C
<b>Intermittent Operating Temperature</b>	+95 °C
<b>Water Absorption</b>	0.13 %
<b>Tensile Strength</b>	0.35 MPa
<b>Elongation at break</b>	1000 %
<b>Volume Resistance</b>	10 <sup>13</sup> Ω cm



### HelaTape Power - Rubber and higher voltage tapes

- HelaTape Power 800 - self-amalgamating silicone high voltage tape



HelaTape Power 800 is a silicone rubber tape with triangular cross-section.

#### Features and Benefits

- Self-amalgamating, chemically cross-linked silicone rubber tape
- Triangular cross-section with centre line for precise half-overlapping
- Resistant to creepage and surface erosion
- Fuses into solid mass within minutes of application
- No adhesive coating
- Non-contaminating, self-cleaning surface

<b>MATERIAL</b>	Silicone (SI)
<b>Operating Temperature</b>	+180 °C
<b>Tensile Strength</b>	3.5 MPa
<b>Elongation at break</b>	400 %
<b>Dielectric Strength</b>	23.5 kV/mm



- HelaTape Power 750 - medium voltage mastic tape

TYPE	Thickness (T)	Width (W)	Length (L)	Colour	Article-No.
HTAPE-POWER750	3.20	38.0	1.5 m	Black (BK)	711-00300

All dimensions in mm. Subject to technical changes.  
Minimum Order Quantity (MOQ) may differ from package content.

- HelaTape Power 800 - self-amalgamating silicone high voltage tape

TYPE	Thickness (T)	Width (W)	Length (L)	Colour	Article-No.
HTAPE-POWER800	0.51	25.0	9.1 m	Grey (GY)	711-00400

All dimensions in mm. Subject to technical changes.  
Minimum Order Quantity (MOQ) may differ from package content.



### HelaTape Power - Rubber and higher voltage tapes

- HelaTape Power 810 - self-amalgamating high voltage tape



HelaTape Power 810 enables jacketing splices up to 69 kV.

#### Features and Benefits

- 0.76 mm thick ethylene propylene rubber
- Self-amalgamating and jackets splices up to 69 kV
- Halogen-free with outstanding corona, ozone and UV-resistance
- Amalgamates quickly
- Void-free, electrically stable layering
- Ideal for water-proofing
- Excellent moisture, corrosion and chemical resistance

<b>MATERIAL</b>	Ethylene Propylene Rubber (EPR)
<b>Operating Temperature</b>	+90 °C
<b>Intermittent Operating Temperature</b>	+130 °C
<b>Water Absorption</b>	0.06 %
<b>Tensile Strength</b>	2.50 MPa
<b>Elongation at break</b>	930 %
<b>Volume Resistance</b>	10 <sup>16</sup> Ω cm
<b>Dielectric Strength</b>	35 kV/mm



### HelaTape Power - Rubber and higher voltage tapes

- HelaTape Power 820 - self-amalgamating high voltage tape, linerless



The high-voltage tape HelaTape Power 820 yields a uniform and void-free build-up.

#### Features and Benefits

- Ethylene rubber-based, high-voltage tape
- Excellent electrical, chemical and physical properties
- Liner-less, self-bonding tape
- Much quicker taping speeds tapes with liner
- Uniform and void-free layering
- Excellent stretch to conform to the most complex shapes and contours

<b>MATERIAL</b>	Ethylene Propylene Rubber (EPR)
<b>Operating Temperature</b>	+90 °C
<b>Intermittent Operating Temperature</b>	+130 °C
<b>Water Absorption</b>	0.06 %
<b>Tensile Strength</b>	3.30 MPa
<b>Elongation at break</b>	900 %
<b>Volume Resistance</b>	10 <sup>16</sup> Ω cm
<b>Dielectric Strength</b>	35 kV/mm



- HelaTape Power 810 - self-amalgamating high voltage tape

TYPE	Thickness (T)	Width (W)	Length (L)	Colour	Article-No.
HTAPE-POWER810	0.76	19.0	9.1 m	Black (BK)	711-00401

All dimensions in mm. Subject to technical changes.  
Minimum Order Quantity (MOQ) may differ from package content.

- HelaTape Power 820 - self-amalgamating high voltage tape, linerless

TYPE	Thickness (T)	Width (W)	Length (L)	Colour	Article-No.
HTAPE-POWER820	0.76	19.0	9.1 m	Black (BK)	711-00402

All dimensions in mm. Subject to technical changes.  
Minimum Order Quantity (MOQ) may differ from package content.



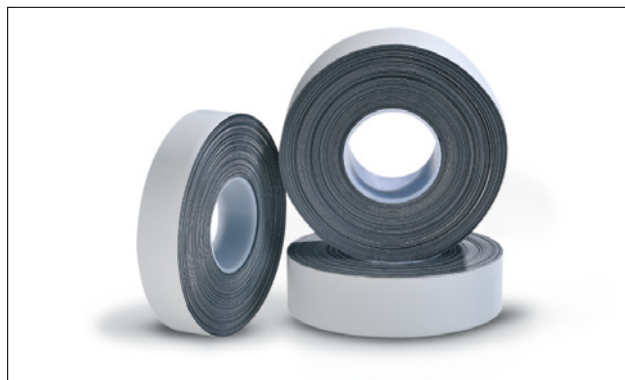


## HelaTape Power - Rubber and higher voltage tapes

- HelaTape Power 900 extra high voltage tapes

### Features and Benefits

- Ethylene rubber-based, high-voltage tape
- Superior electrical, chemical, mechanical and thermal properties
- Fuses quickly for void-free, electrically stable layering
- Insulates and jackets splices on power cables from 600 volts up to 138 kV
- To build stress cones and termination jackets on cables up to 35 kV
- Outstanding corona, ozone, chemical and corrosion resistance
- Withstands UV and cable impregnates



HelaTape Power 900 - For insulating and jacketing splices on power cables from 600 volts up to 138 kV.

<b>MATERIAL</b>	Ethylene Propylene Rubber (EPR)
<b>Operating Temperature</b>	+90 °C
<b>Intermittent Operating Temperature</b>	+130 °C
<b>Water Absorption</b>	0.02 %
<b>Tensile Strength</b>	3.5 MPa
<b>Elongation at break</b>	880 %
<b>Volume Resistance</b>	10 <sup>16</sup> Ω cm
<b>Dielectric Strength</b>	38 kV/mm



TYPE	Thickness (T)	Width (W)	Length (L)	Colour	Article-No.
HTAPE-POWER900	0.51	19.0	9.1 m	Black (BK)	711-00500
	0.51	25.0	9.1 m	Black (BK)	711-00501
	0.51	38.0	9.1 m	Black (BK)	711-00502

All dimensions in mm. Subject to technical changes.  
Minimum Order Quantity (MOQ) may differ from package content.

HellermannTyton's extensive product range provides full end to end solutions for cabling project of any size to all types of business.

the sky is the limit

AlphaSnap   RapidNet   Deca<sup>10</sup>   EcoBand   Global  
GigaBand   FibreBand   iD   iDActive   MegaBand

Better Technology through Innovation



Find more information in our  
Connectivity Catalogue.

[www.HellermannTyton.co.uk](http://www.HellermannTyton.co.uk)  
**HellermannTyton**



## Technical Tapes

### • HelaTape Tex - textile tapes

#### Features and Benefits

- High quality textile tapes based on cotton
- Highly tear-resistant in longitudinal direction
- Easy to strip-off by hand in lateral direction
- Various colours and the matt finish of the surface for use in stage and set building where light reflections must be avoided
- Useful for various applications like bundling, fixing, identification
- Tape can be removed without residues due to high quality rubber based adhesive



HelaTape Tex is available in various colours and sizes.

<b>MATERIAL</b>	Cotton (CO)
<b>Adhesion to Backing</b>	3 N/10 mm
<b>Breaking Strength</b>	64 N/10 mm
<b>Elongation at break</b>	10%
<b>Operating Temperature</b>	-30 °C to +80 °C



TYPE	Thickness (T)	Width (W)	Length (L)	Colour	Article-No.
HTAPE-TEX-12x50	0.31	12.0	50.0 m	Black (BK)	712-00304
	0.31	12.0	50.0 m	Blue (BU)	712-00300
	0.31	12.0	50.0 m	Green (GN)	712-00303
	0.31	12.0	50.0 m	Grey (GY)	712-00306
	0.31	12.0	50.0 m	Red (RD)	712-00301
	0.31	12.0	50.0 m	White (WH)	712-00305
	0.31	12.0	50.0 m	Yellow (YE)	712-00302
HTAPE-TEX-15x25	0.31	15.0	25.0 m	Black (BK)	712-00054
	0.31	15.0	25.0 m	Blue (BU)	712-00050
	0.31	15.0	25.0 m	Green (GN)	712-00053
	0.31	15.0	25.0 m	Grey (GY)	712-00056
	0.31	15.0	25.0 m	Red (RD)	712-00051
	0.31	15.0	25.0 m	White (WH)	712-00055
	0.31	15.0	25.0 m	Yellow (YE)	712-00052
HTAPE-TEX-15x50	0.31	15.0	50.0 m	Black (BK)	712-00404
	0.31	15.0	50.0 m	Blue (BU)	712-00400
	0.31	15.0	50.0 m	Green (GN)	712-00403
	0.31	15.0	50.0 m	Grey (GY)	712-00406
	0.31	15.0	50.0 m	Red (RD)	712-00401
	0.31	15.0	50.0 m	White (WH)	712-00405
	0.31	15.0	50.0 m	Yellow (YE)	712-00402

All dimensions in mm. Subject to technical changes.  
Minimum Order Quantity (MOQ) may differ from package content.



### Technical Tapes

- HelaTape Tex - textile tapes

TYPE	Thickness (T)	Width (W)	Length (L)	Colour	Article-No.
HTAPE-TEX-19x25	0.31	19.0	25.0 m	Black (BK)	712-00154
	0.31	19.0	25.0 m	Blue (BU)	712-00150
	0.31	19.0	25.0 m	Green (GN)	712-00153
	0.31	19.0	25.0 m	Grey (GY)	712-00156
	0.31	19.0	25.0 m	Red (RD)	712-00151
	0.31	19.0	25.0 m	White (WH)	712-00155
	0.31	19.0	25.0 m	Yellow (YE)	712-00152
HTAPE-TEX-19x50	0.31	19.0	50.0 m	Black (BK)	712-00504
	0.31	19.0	50.0 m	Blue (BU)	712-00500
	0.31	19.0	50.0 m	Green (GN)	712-00503
	0.31	19.0	50.0 m	Grey (GY)	712-00506
	0.31	19.0	50.0 m	Red (RD)	712-00501
	0.31	19.0	50.0 m	White (WH)	712-00505
	0.31	19.0	50.0 m	Yellow (YE)	712-00502
HTAPE-TEX-25x25	0.31	25.0	25.0 m	Black (BK)	712-00254
	0.31	25.0	25.0 m	Blue (BU)	712-00250
	0.31	25.0	25.0 m	Green (GN)	712-00253
	0.31	25.0	25.0 m	Grey (GY)	712-00256
	0.31	25.0	25.0 m	Red (RD)	712-00251
	0.31	25.0	25.0 m	White (WH)	712-00255
	0.31	25.0	25.0 m	Yellow (YE)	712-00252
HTAPE-TEX-25x50	0.31	25.0	50.0 m	Black (BK)	712-00604
	0.31	25.0	50.0 m	Blue (BU)	712-00600
	0.31	25.0	50.0 m	Green (GN)	712-00603
	0.31	25.0	50.0 m	Grey (GY)	712-00606
	0.31	25.0	50.0 m	Red (RD)	712-00601
	0.31	25.0	50.0 m	White (WH)	712-00605
	0.31	25.0	50.0 m	Yellow (YE)	712-00602
HTAPE-TEX-50x25	0.31	50.0	25.0 m	Black (BK)	712-00354
	0.31	50.0	25.0 m	Blue (BU)	712-00350
	0.31	50.0	25.0 m	Green (GN)	712-00353
	0.31	50.0	25.0 m	Grey (GY)	712-00356
	0.31	50.0	25.0 m	Red (RD)	712-00351
	0.31	50.0	25.0 m	White (WH)	712-00355
	0.31	50.0	25.0 m	Yellow (YE)	712-00352
HTAPE-TEX-50x50	0.31	50.0	50.0 m	Black (BK)	712-00904
	0.31	50.0	50.0 m	Blue (BU)	712-00900
	0.31	50.0	50.0 m	Green (GN)	712-00903
	0.31	50.0	50.0 m	Grey (GY)	712-00906
	0.31	50.0	50.0 m	Red (RD)	712-00901
	0.31	50.0	50.0 m	White (WH)	712-00905
	0.31	50.0	50.0 m	Yellow (YE)	712-00902

All dimensions in mm. Subject to technical changes.  
Minimum Order Quantity (MOQ) may differ from package content.